



EAGLE PARK SCHOOL NEWSLETTER 42

Friday 11th October 2024

Autumn Term 2024

Dear Parents, Carers and Students,

This week all our students took part in The Big Draw event that is going on nationwide in all schools. They are developing a tile mosaic that will be on permanent display in the reception area of the school. It was lovely to see their enthusiasm for art and how talented they are. We will publish photos of the display once it is in place and you will of course see it when you come into school in the future.

We continue to celebrate Black History Month and students have been accessing activities and information so that they understand the amazing contribution that Black people have made to our society, culture and history.

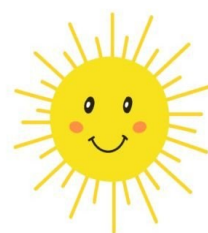
We will continue to send out information in the newsletter about activities in the different boroughs and if any family has information about activities that are going on in their area we would love to receive this so we can pass it onto all the families in our community.

We wish you all a very happy, relaxing weekend!

Margaret Carey

Headteacher.

All of us at Eagle Park wish you a very happy weekend!



Term start date:	Wednesday 4th September 2024
Term Ends:	Friday 20th December 2024
Half Term:	Monday 28th October to Friday 1st November 2024
Christmas Break starts:	Monday 23rd December 2024 - Friday 3rd January 2025

Class News

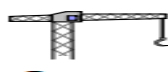
Crane Class



Winter



Term



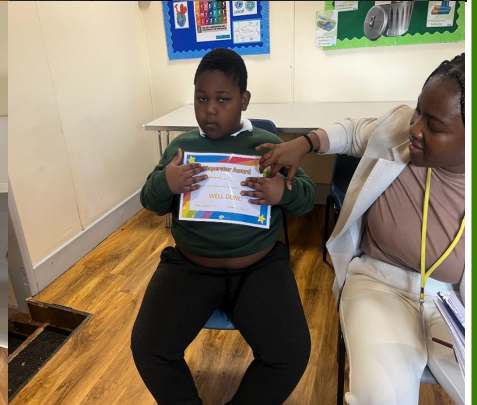
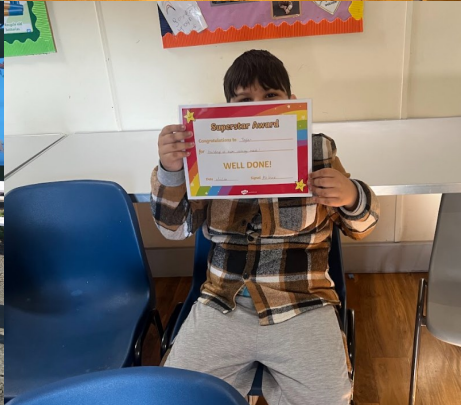
Crane



Class



Activities



It has been a busy week for Crane again! In maths we have been playing counting games, everyone is getting better and better at being able to count out exact numbers. In English Brown Bear, Brown Bear continues to be the flavour of the month and we are learning how to associate colours to their corresponding words. The big event this week was the Big Draw and starting to prepare for a new and exciting school joint project. Although we were all frustrated with the wet weather in the early part of the week we managed to enjoy the sunshine outside on Thursday and Friday. Another super week! Well done Cranes!

Class News

Robin Class



Well Done, Robin Class!

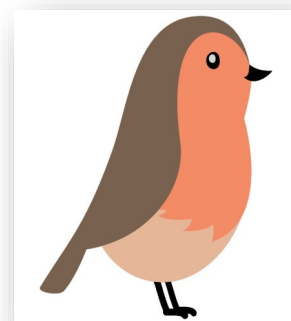
This week, Robin Class took part in **The Big Draw** as part of a nationwide competition. Our school is creating a large tree made up of mini canvas tiles, and the first stage involved using a paper view-finder to draw a magnified view of their assigned section. The children thoroughly enjoyed this creative activity on Thursday, 10th October.

In Maths, we focused on addition using 2-digit numbers, and the children showed great progress in understanding how to solve these problems.

In Literacy, we explored the story of Tiny Seed and created our own sentences using colourful semantics, which helped the children build their language skills in a fun and engaging way.

We also had a fantastic time at **Gunnersbury Triangle** for our PE lesson, where the children learned to move their bodies for fitness and mobility with music. This was a highlight of the week, and everyone had a great time!

Additionally, Robin Class enjoyed using their creative minds to build dens and solve puzzles, which has helped them improve focus and problem-solving skills.



Keep up the great work, Robin Class!

Class News

Dove Class



This week in Dove class, we have actively engaged in the Big Draw event, immersing ourselves in a range of art and drawing projects organised by the school. Alongside these creative activities, we have also dedicated time to focus on our comprehension and reading tasks.

Class News

Goldfinch Class



This week in Goldfinch Class, we've had an exciting mix of activities that engaged our minds and bodies. In PE our class played football and dodgeball. It was wonderful to see teamwork and sportsmanship in action as they enjoyed some friendly competition. In music class, we explored the joys of singing and playing instruments. The students are really coming along, and it's heart-warming to hear their enthusiasm as they sing songs. Our literacy focus continued to revolve around the theme of harvest around the world. We've been reading stories that highlight different cultural practices and celebrations, enriching our understanding of global traditions. For food tech our very delicious Strawberry puff pastry was a hit! This week is the big draw! Students took part in drawing their tiles and focused on being creative. It was so much fun! We're looking forward to another fun-filled week ahead.



Class News

Phoenix Class



We have had a very busy week in Phoenix Class.

Our Monday fitness session was led by Mr Ryan this week who introduced us to a range of new warm up exercises.

In Art with Mr Allen the students continued to focus on the theme of Autumn creating wreaths of multicoloured leaves to reflect the season. In English we have started writing our newspaper articles and in Maths we have recapped column addition. Our independent cooking skills were put to the test this week in Food Technology making cheese omelettes which were a great success!

EAGLE PARK SCHOOL NEWSLETTER



Students are nominated weekly for a class award.

**This week's EPS Eagle
Class Award goes to:**



Crane: Taylan

“For building an amazing train track!”

Robin: Khuleg

“For being so considerate in music and doing lots of work in maths.”

Dove: Jakub

“excelled in maths this week.”

Goldfinch: Lydia

“For completing her tasks and participating in whole group activities.”

Phoenix: Marcus and Lewis

“For showing real kindness in helping others make friends.”



EAGLE PARK SCHOOL NEWSLETTER

Labelling items



Please ensure every item of your child's clothing - including gloves and hats - is labelled with their name. This ensures items can be returned to their owner and saves time when getting ready to go outside.

Reporting pupil absence

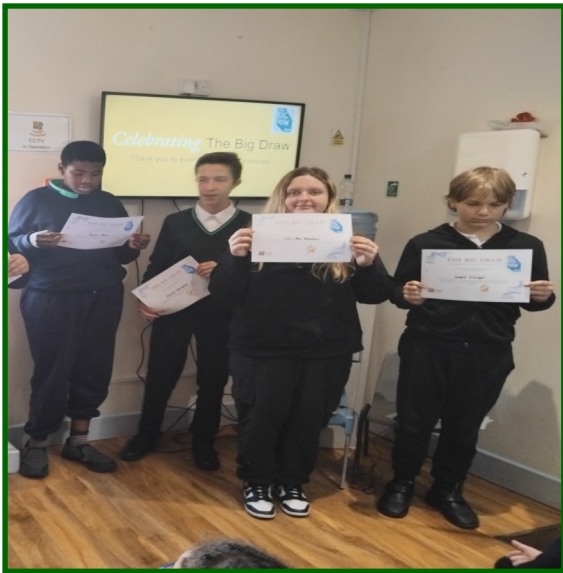


In line with our Attendance Policy, parents/carers must telephone the school (0203 8765076) or sent an email to admin@eagleparkschool.co.uk to inform us of the specific reason for their child's absence on each day of absence

(unless the illness is prolonged, e.g. chicken pox). Symptoms must be provided; advising that children are 'sick' or 'unwell' does not give enough information. In accordance with Government recommendations, a pupil suffering from diarrhoea and/or vomiting must remain off school for 48 hours before returning. For example, if they are sent home from school on a Tuesday after being sick, they can return on Friday, provided there are no further episodes of vomiting on Wednesday or Thursday.

EAGLE PARK SCHOOL NEWSLETTER

EPS Students celebrtaing The Big Draw.



EPS Music Lesson



EAGLE PARK SCHOOL NEWSLETTER

Therapy page

Sensory processing

Types of sensory processing challenges

- 1. Sensory Over-Responsivity (Hypersensitivity):**
Overreacting to sensory stimuli, such as being easily overwhelmed by loud sounds, bright lights, or certain textures.
- 2. Sensory Under-Responsivity (Hyposensitivity):**
Underreacting to sensory stimuli, leading to behaviours like not noticing pain, needing intense input (e.g., rough play), or craving sensory experiences.
- 3. Sensory Seeking:** Craving excessive sensory input, such as constantly moving, touching things, or seeking out intense sensations.
- 4. Sensory Avoiding:** Avoiding certain sensory experiences, such as avoiding certain textures in foods, avoiding bright lights, or refusing to engage in physical activities that involve movement.



OCCUPATIONAL THERAPY



Understanding questions: using stories

Reading is a great way to develop your child's language skills. This includes developing their understanding of different kinds of questions. Support your child to understand and answer questions by reading together at home!

Top tips on asking questions when reading:

- Start off by asking questions related to **what they can see in pictures** (e.g., What is this? Who is this? What are they doing? Where are they?)
- If your child struggles to answer the questions, **model the answer** to them by **describing what you can see** - e.g., "Oh! I can see a boy here (pointing). The boy is fishing!".
- See if your child can also answer questions that require inferring skills (when, why, how) questions. Consider **relating it back to real life experiences** - e.g., "The boy is crying because he fell down and hurt himself. Remember when you fell down yesterday and you cried? How did you feel?".



SPEECH & LANGUAGE THERAPY

EAGLE PARK SCHOOL NEWSLETTER



Eagle Park School Term and Holiday Dates
Academic Year 2024-2025



September 2024							October 2024							November 2024							December 2024						
M	T	W	T	F	S	S	M	T	W	T	F	S	S	M	T	W	T	F	S	S	M	T	W	T	F	S	S
						1	1	2	3	4	5	6					1	2	3							1	
2	3	4	5	6	7	8	7	8	9	10	11	12	13	4	5	6	7	8	9	10	2	3	4	5	6	7	8
9	10	11	12	13	14	15	14	15	16	17	18	19	20	11	12	13	14	15	16	17	9	10	11	12	13	14	15
16	17	18	19	20	21	22	21	22	23	24	25	26	27	18	19	20	21	22	23	24	16	17	18	19	20	21	22
23	24	25	26	27	28	29	28	29	30	31			25	26	27	28	29	30	23	24	25	26	27	28	29		
30																			30	31							
January 2025							February 2025							March 2025							April 2025						
M	T	W	T	F	S	S	M	T	W	T	F	S	S	M	T	W	T	F	S	S	M	T	W	T	F	S	S
		1	2	3	4	5						1	2						1	2		1	2	3	4	5	6
6	7	8	9	10	11	12	3	4	5	6	7	8	9	3	4	5	6	7	8	9	7	8	9	10	11	12	13
13	14	15	16	17	18	19	10	11	12	13	14	15	16	10	11	12	13	14	15	16	14	15	16	17	18	19	20
20	21	22	23	24	25	26	17	18	19	20	21	22	23	17	18	19	20	21	22	23	21	22	23	24	25	26	27
27	28	29	30	31			24	25	26	27	28			24	25	26	27	28	29	30	28	29	30				
														31													
May 2025							June 2025							July 2025							August 2025						
M	T	W	T	F	S	S	M	T	W	T	F	S	S	M	T	W	T	F	S	S	M	T	W	T	F	S	S
			1	2	3	4						1	1	2	3	4	5	6					1	2	3		
5	6	7	8	9	10	11	2	3	4	5	6	7	8	7	8	9	10	11	12	13	4	5	6	7	8	9	10
12	13	14	15	16	17	18	9	10	11	12	13	14	15	14	15	16	17	18	19	20	11	12	13	14	15	16	17
19	20	21	22	23	24	25	16	17	18	19	20	21	22	21	22	23	24	25	26	27	18	19	20	21	22	23	24
26	27	28	29	30	31		23	24	25	26	27	28	29	28	29	30	31			25	26	27	28	29	30	31	
							30																				

Autumn Term:	Starts: Monday 2 September 2024 Ends: Friday 20 December 2024 Half Term: Monday 28 October to Friday 1 November Christmas break starts Monday 23 December 2024 and ends Friday 3 January 2025	75 days	Public holidays during 2024 – 2025
Spring Term:	Starts: Monday 6 January 2025 Half Term: Monday 17 February to Friday 21 February 2025 Easter Break starts Monday 7 April and ends Monday 21 April 2025	60 days	Christmas day Boxing day New Years day Good Friday Easter Monday Early May bank Holiday Spring bank holiday Summer Bank holiday
Summer Term:	Starts: Tuesday 22 April 2025 Half Term: Monday 26 May to Friday 30 May 2025 Summer Break starts Wednesday 23 July 2025	60 days	Wednesday 25 December Thursday 26 December Wednesday 1 January Friday 18 March Monday 21 April Monday 5 May Monday 26 May Monday 25 August

= School day
 = School holidays
 = Staff inset day
 = Bank holidays
 = Weekends
 Eagle Park allocates five non-pupil days.